

RESOLUTION NO. 2019-893

RESOLUTION DIRECTING THE CITY MANAGER TO PREPARE A SERVICE PLAN FOR APPROXIMATELY 21,000 ACRES CONTIGUOUS TO THE CITY OF ARANSAS PASS AND PROVIDING FOR AN EFFECTIVE DATE

WHEREAS, it has been determined, and the City Council so finds, that it would be advantageous to the City and to its citizens, and it is in the public interest in furtherance of the general welfare, safety and health of its citizens, to prepare a Service Plan for approximately 21,000 acres contiguous to the City of Aransas Pass.

NOW THEREFORE BE IT RESOLVED BY THE CITY COUNCIL OF THE CITY OF ARANSAS PASS, TEXAS:

SECTION 1. The City Council hereby directs the City Manager to prepare a service plan for approximately 21,000 acres contiguous to the City of Aransas Pass. Attached hereto is a map of 21,000 acres as Exhibit "A", and incorporated herein by this reference, is hereby approved and adopted.

SECTION 2. The City Manager shall prepare a Service Plan to provide for the same number of services and levels of service for any area to be annexed and to the same extent that such services are in existence in the area annexed immediately preceding the date of annexation or that are otherwise available in other parts of the City with land uses and population densities similar to those contemplated or projected in the area annexed.

SECTION 3. Upon approval of the prepared Service Plan it shall remain in effect for a period of ten years or until amended by the City Council. Renewal of the approved Service Plan shall be at the discretion of the City Council.

PASSED AND APPROVED this 17th day of May, 2019.

CITY OF ARANSAS PASS, TEXAS



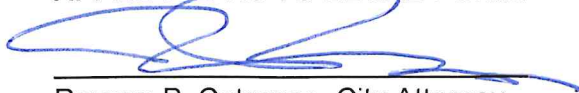
Ramiro Gomez
Mayor

ATTEST:

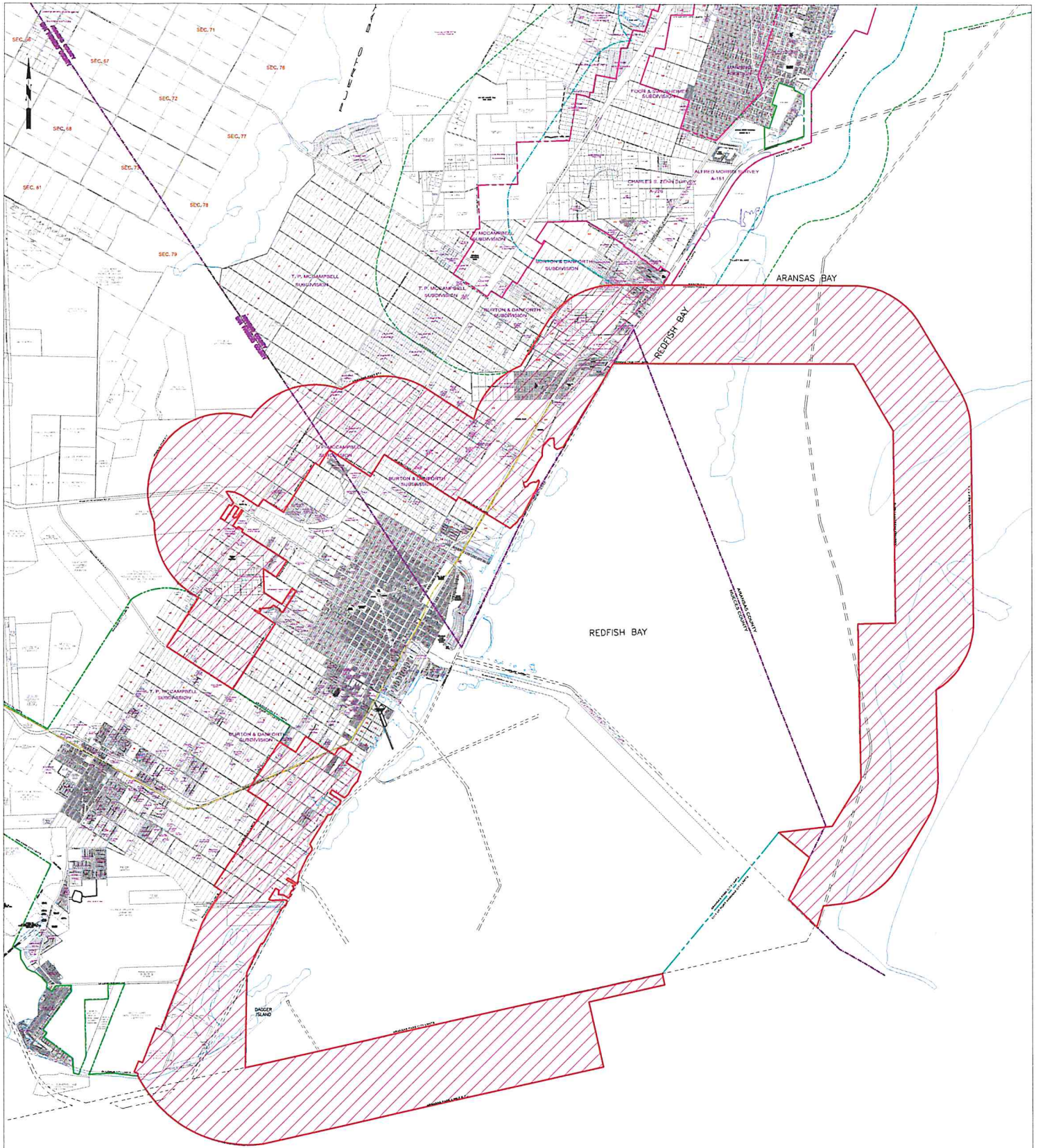


Mary Juarez
City Secretary

APPROVED AS TO LEGAL FORM:



Roxann P. Cotroneo, City Attorney



20,109 ACRES
WITHIN ARANSAS PASS 1- MILE E.T.J.
 (Acreage Approximate)

LEGEND

 Hatched Area = Aransas Pass
 1-Mile E.T.J.

MAY 16, 2019

LOT LINES ARE GRAPHICALLY REPRESENTED ACCORDING TO THE MOST RECENT DATA AVAILABLE. ALL LOT SIZES LISTED WITHIN THIS MAP ARE APPROXIMATE.

NO PORTION OF THIS MAP MAY BE REPRODUCED IN ANY FORM WITHOUT THE WRITTEN AUTHORIZATION OF GRIFFITH & BRUNDRETT SURVEYING & ENGINEERING, P.C.

Griffith & Brundrett
 Surveying & Engineering, Inc.
 411 S. Pearl St., P.O. Box 2322
 Rockport, Texas 78381
 ☎ 361-729-6479
 ☎ 361-729-7933
 ✉ jerryb@gsurveyor.com
 🌐 www.gsurveyor.com

SCALE 1" = 2000'